



St Andrews Court, Sutton, SM1 SM1

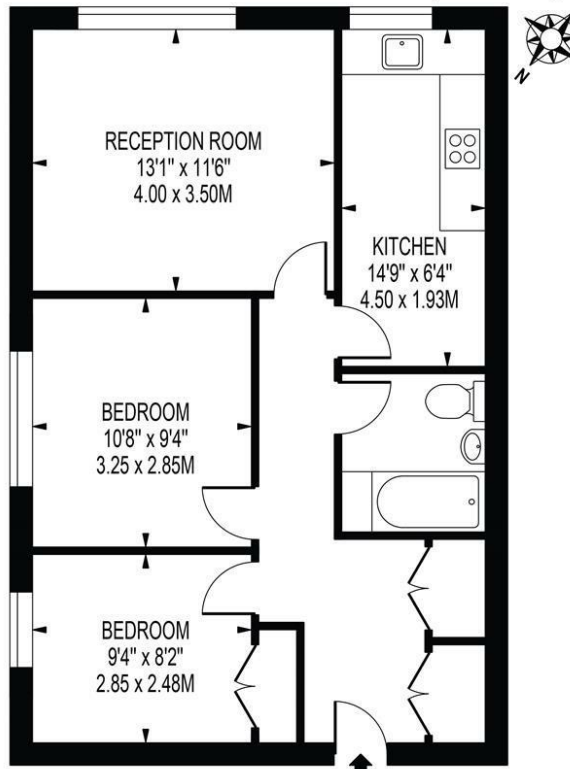
£1,695 PCM

- Two double bedrooms
- First floor apartment
- Spacious reception
- Fitted kitchen and bathroom
- Garage
- Good local amenities
- Unfurnished
- Available 15th June 2024
- Good condition throughout
- Excellent transport links



ST. ANDREWS COURT

APPROXIMATE GROSS INTERNAL FLOOR AREA: 610 SQ FT - 56.70 SQ M



FIRST FLOOR

FOR ILLUSTRATION PURPOSES ONLY

THIS FLOOR PLAN SHOULD BE USED AS A GENERAL OUTLINE FOR GUIDANCE ONLY AND DOES NOT CONSTITUTE IN WHOLE OR IN PART AN OFFER OR CONTRACT. ANY INTENDING PURCHASER OR LESSEE SHOULD SATISFY THEMSELVES BY INSPECTION, SEARCHES, ENQUIRIES AND FULL SURVEYS AS TO THE CORRECTNESS OF EACH STATEMENT. ANY AREAS, MEASUREMENTS OR DISTANCES QUOTED ARE APPROXIMATE AND SHOULD NOT BE USED TO VALUE A PROPERTY OR BE THE BASIS OF ANY SALE OR LET.

